

STOFGROEP 1 Camira Lucia (100% gerecycled) + Carlow



Havana
(YB009)



Paseo
(YB019)



Aruba
(YB093)



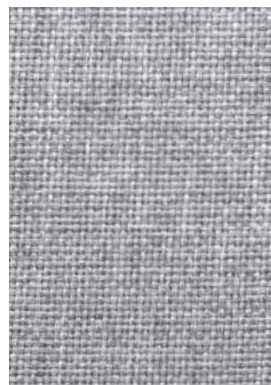
Slip
(YB094)



Avoca
(CLW22)



Sligo
(CLW13)



Tallow
(CLW01)



Glenamoy
(CLW24)



Emly
(CLW21)



Ardmore
(CLW19)



Quin
(CLW04)



Callan
(CLW05)

STOFGROEP 2 Wol (100% gerecycled) + printdoek decotex | 15% meerprijs



Zwart
(FR1003)



Olive
(FR53)



Mint
(FR50)



Azure
(FR144)



Light grey
(FR1000)



Ashgrey
(FR40)



Beige
(FR1037)



Kiezel
(FR7)



Printdoek decotex

**OVERIGE KLEUREN EN STOFFERINGEN
OP AANVRAAG**

SPECIFICATIES

CAMIRA LUCIA

Composition:	100% Recycled Polyester Non metallic dyestuffs
Width:	170cm
Weight:	260 g/m2
Rubbing fastness - Dry:	4
Rubbing fastness - Wet:	4
Flammability:	BS EN 1021 - 1:2006 (cigarette) BS EN 1021 - 2:2006 (match) BS 7176:2007 Low Hazard BS 476 Part 7 Class 1
Light fastness:	6
Cleaning:	Vacuum regularly. Wipe clean with a damp cloth or shampoo using proprietary upholstery shampoo.

PRINTED DECOTEX

Composition:	100% Polyester Non metallic dyestuffs
Width:	315cm
Weight:	215 g/m2
Rubbing fastness - Dry:	4
Rubbing fastness - Wet:	4
Flammability:	EN13501 B1 for 4102, Class 1
Light fastness:	6
Cleaning:	Vacuum regularly. Wipe clean with a damp cloth or shampoo using proprietary upholstery shampoo.

CAMIRA CARLOW

Composition:	100% Recycled Polypropylene
Width:	170cm
Weight:	214 g/m2
Rubbing fastness - Dry:	4
Rubbing fastness - Wet:	4
Flammability:	EN1021-1 (cigarette) EN13501-1 adhered class b, s1, d0 EN13501-1 un-adhered class c, s2, d0
Light fastness:	6
Cleaning:	Vacuum regularly. Wipe clean with a damp cloth or shampoo using proprietary upholstery shampoo.

FACET

Composition:	75% WO 25% PA
Width:	145cm
Weight:	600 g/m2
Rubbing fastness - Dry:	4
Rubbing fastness - Wet:	4
Flammability:	BS5852 part 1 (1979) DIN EN ISO 1021-1:2014
Light fastness:	5
Cleaning:	Dry clean any solvent except trichloroethylene.